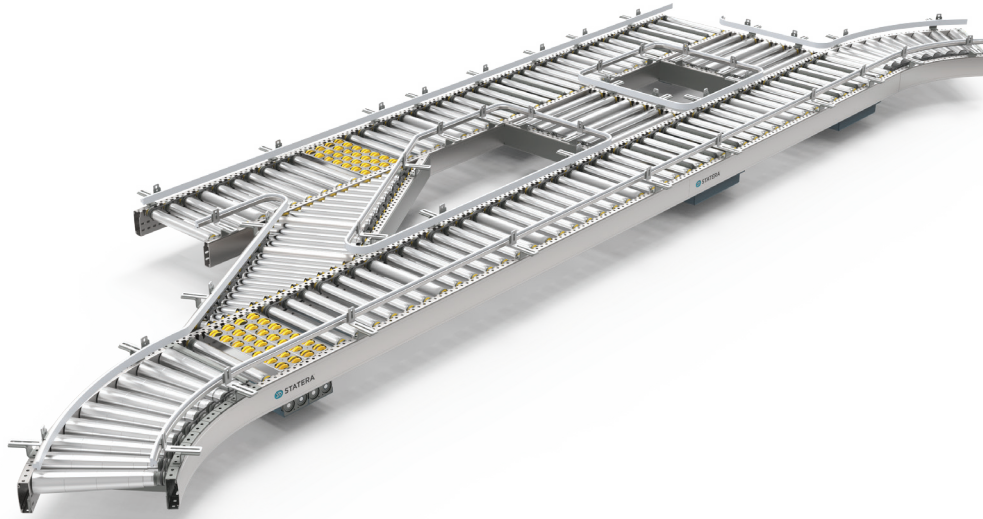




S&I

 SYSTEMS &
INTEGRATION

CASE CONVEYOR - MOTOR DRIVEN ROLLER (MDR)



Proven, Dependable Zero Back Pressure Motor Driven Roller (MDR) Turnkey Solutions For Case Packed Products

Statera designs and manufactures turnkey conveyor systems for complete and partial packaging lines. We offer a full range of product conveyor, case conveyor and pallet conveyor technologies and we specialize in projects requiring single source accountability to deliver reliable performance for our customers.

Our zero back pressure Motor Driven Roller (MDR) systems use modular components that offer dependable performance, low maintenance and flexibility for future scalability and changing production requirements.

Our single source approach to turnkey conveyor solutions includes assessing, designing, specifying, manufacturing, programming, integrating, testing, installing, commissioning and handing-off production ready packaging lines. The broad scope of our responsibility reduces risk for the customer and frees-up their key personnel to focus on getting finished product out the door.

The Statera conveyor team includes highly trained engineers and project managers specializing in conveyor systems. They deliver engineering expertise supported by packaging line design tools and conveying system integration know-how to every project.

FEATURES AND BENEFITS

- **100% electrically powered lifts & motors** – Reduces noise, downtime, maintenance hassle and expense of systems that include pneumatic components
- **Modular design and construction** – Three standard frame widths with a full range of straight, curve, merge and alignment segments, each compatible with a wide variety of roller types and styles, assure solutions that can satisfy even the most demanding requirements
- **Zero back pressure** – customizable zones provide effective case accumulation by eliminating case-to-case contact
- **Low maintenance, low total cost of ownership** – Sealed for life roller bearings, zero maintenance rollers and zero pneumatic components translate into a low cost, easy to maintain conveying system
- **Top-accessed, drop-in design for rollers and transfer modules** – Simple, quick removal and smooth installation
- **Distributed 24 v control system** – PLC based system with remote multi-zone controllers reduces programming time by 50% or more
- **Fast installation and start-up** – Pre-assembled modules, easily adjustable side guides and supports, and precisely matched assembly

TYPICAL PRODUCT SPECIFICATIONS

General Technical Data	Maximum Load Capacity*	50kg (110 lb.)/zone
	Speed	0.1 to 1.0 m/s (.33 to 3.3 ft/s) at 35kg (77lb) 0.1 to 0.8 m/s (.33 to 2.6 ft/s) at 50kg (110lb)
	Incline/Decline	Max. 15°
	Ambient Temperature Range**	5 °C to 40 °C (41 °F to 104 °F)
	Chill Temperature Range, Optional	0 to +5 °C (32 °F to 41 °F)
	Deep Freeze Temperature Range, Optional	-30 to 0 °C (-22 °F to 32 °F)
Construction	Materials	Powdercoated Steel Frame, Zinc Plated Steel, PVC, 304 Stainless Steel Optional
	Color	RAL 7042 Traffic Grey
	Wire Mangement	Integrated Wireways with Covers

Roller	Roller Type	Hex Shaft, Spring Loaded
	Roller Material	Bright Zinc Plated Steel, PVC Coated Optional, 304 Stainless Steel Optional
	Roller Diameter	50 mm (2.0")
Dimensional***	Effective Width	420 mm (16.5") 640 mm (25.2") 840 mm (33.1")
	Zone Lengths	Application Specific
	Pass Height (TOR)	+/- 50 mm (2")
	Roller Pitch	60 mm (2.4") 90 mm (3.5")
Drive	Rated Voltage	24V-DC
	Motor Type	24V-DC Roller Motor
	Drive Medium	Straight - Poly Vee Belt Curve - O-ring
	Torque Transmission	Roller to Roller
	Control	Distributed Zone Control
	Communication	Ethernet IP

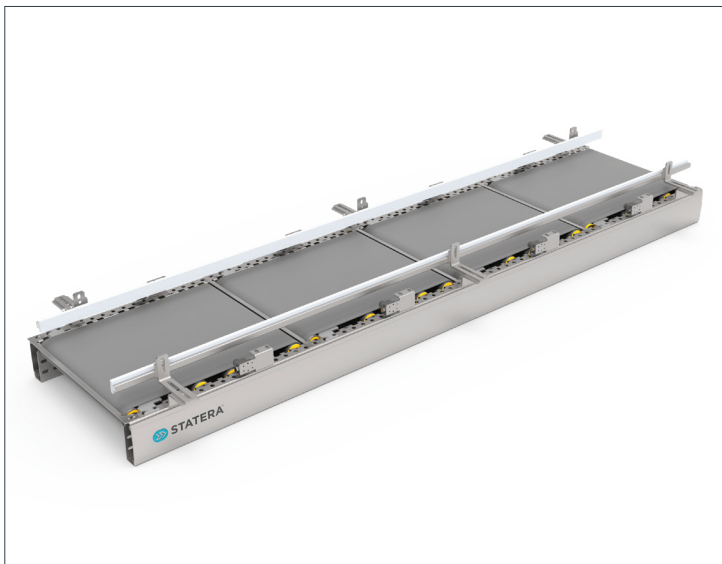
* The combination of maximum values may be limited for specific applications

** This product is available for temperature extended temperature ranges of: Deep Freeze (-30 to 0 °C) and Chill (0 to +5 °C).

Please contact a ProMach Performance Services applications specialist.

*** Custom sizes are available

CONVEYOR, BELT OVER ROLLER SECTION



CONVEYOR, STRAIGHT SECTION, 60MM PITCH

